

# PORTFOLIO

Some Glimpse of our Work

---

---

PENDULUM DECOR  
L.L.C





▬▬▬ Apartments & Penthouses ▬▬▬



# Elegant Elysium



The 3-bedroom Kini residence with outdoor deck is designed using timeless elements within a modern shell. Some of the clients antique furniture and extensive art collection enhance the straight lines of the apartment. A blend of contemporary and colonial, the Kini residence is open, warm and welcoming, truly a reflection of the client

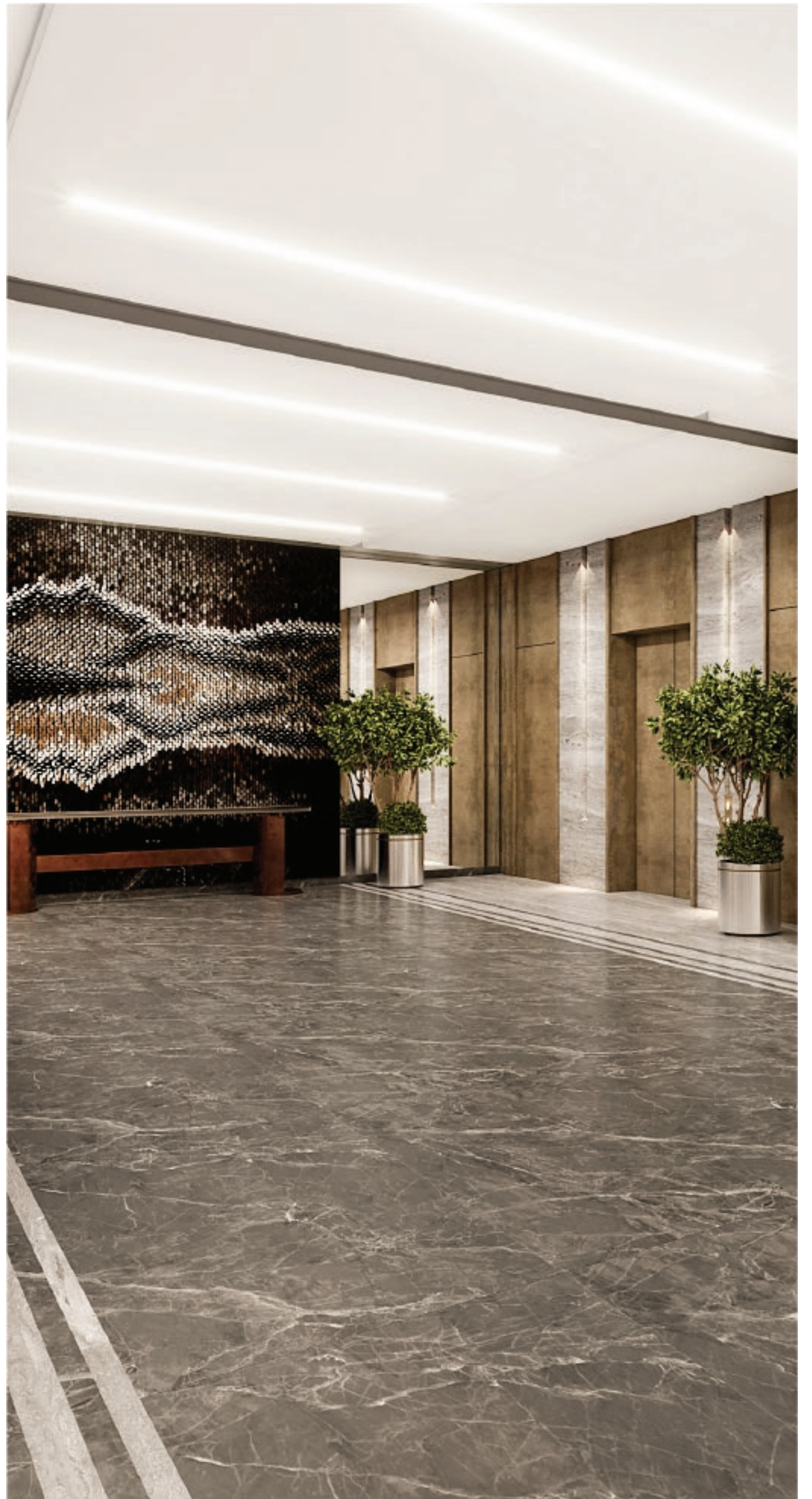














# Coastal Comfort Haven

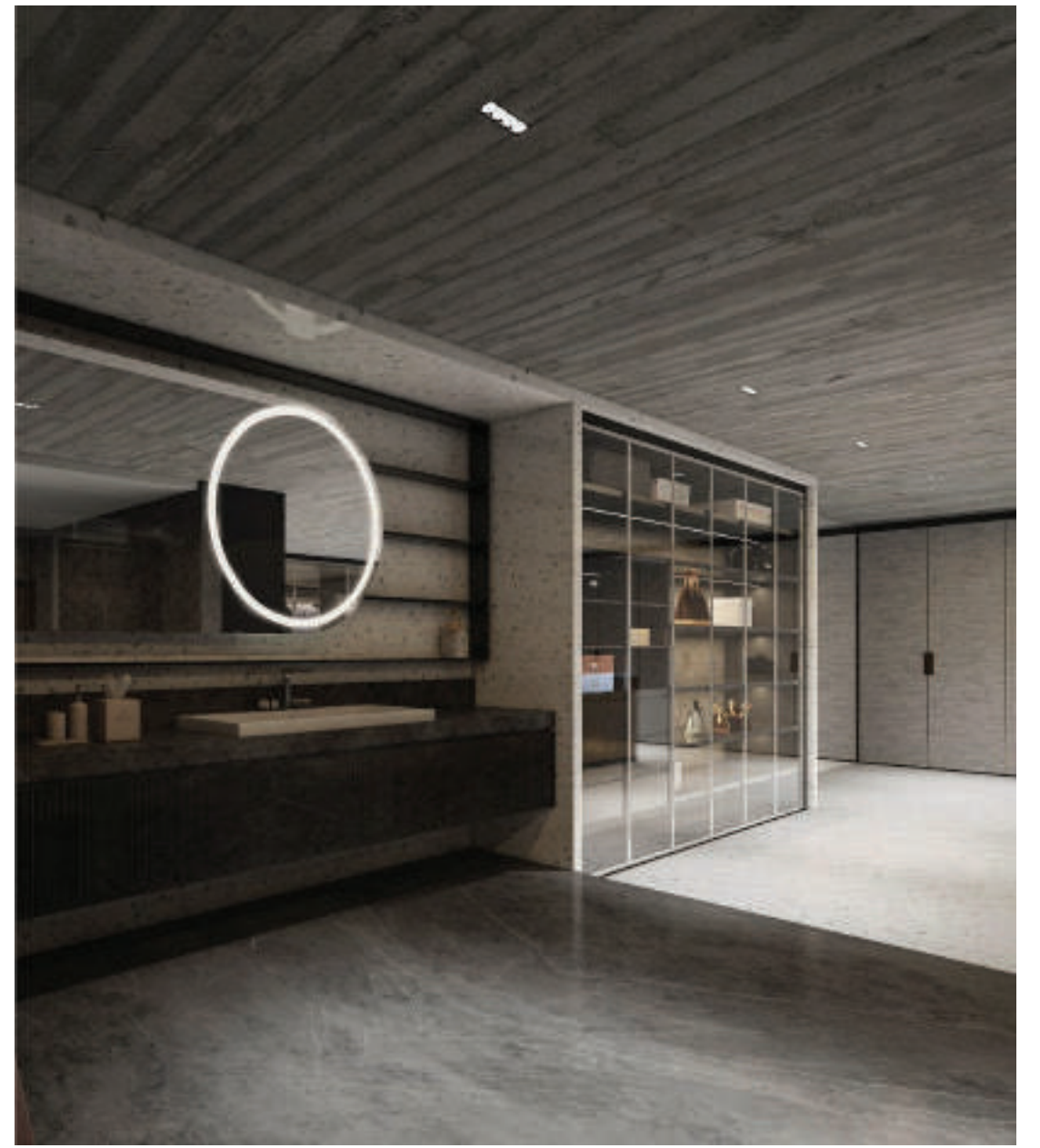


The architecture of the home is angular to get the best views of the ocean and these angles are reflected in the arms of the home; and thus, in the way the materials are laid. The lower level has an angle of terrazzo lines change direction along with the home. Similarly, the saw cut rafters and each bay shifts as the home turns. The zig-zag feel with this earthy material creates a play of modern and rustic themes. The light taupe floor and the saw cut teak rafters are separated by cement finish walls that are mildly nuanced with 2 hues. These 3 elements – the floor, the wall and the ceiling – set a tone of underrated sophistication.















# Art Deco Delights

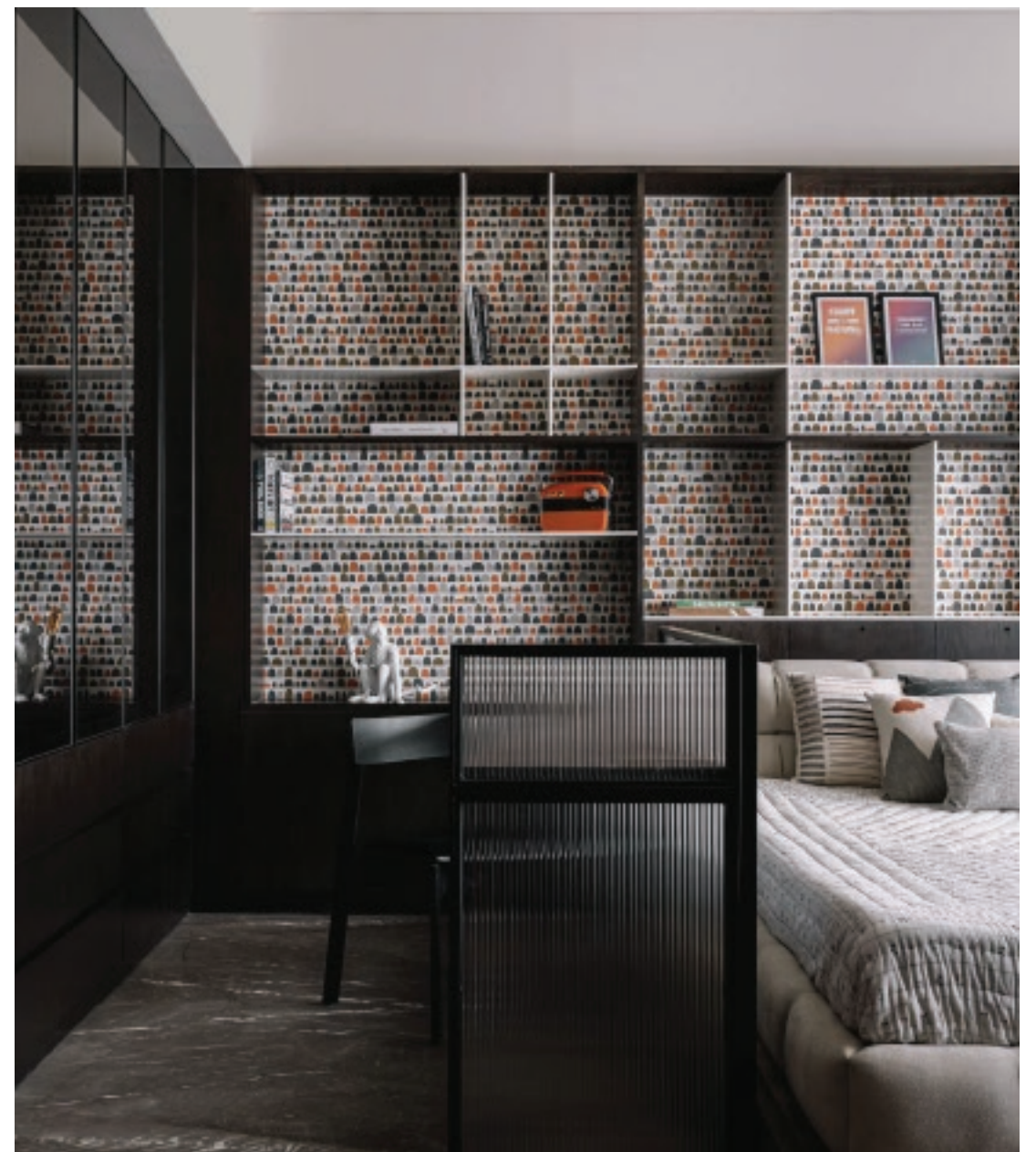


The Ash Abode is a home grounded by simplicity, clean lines and solid color blocks. During the time, we were deeply inspired by Le Corbusier and Pierre Jeanneret – their deep sienna passage of the Villa La Roche, their general polychromatic feel of some of their work. These would complement the woven mid-century modern furniture spread across the house. The natural colors and materials of the furniture pieces stand out vibrantly against the textured gray walls of the house giving the otherwise serious shell a dash of drama. This completed the Zen-meets-mid-century modern look and gave the foyer a burst of authentic depth of space.















# Whimsical Wonderland



A space of drama and contrast, this mock-up apartment intentionally pairs quirky elements with classical ones to create an eclectic, in-vogue and super stylish space. Bold colours against dramatic patterns; antique textures with glossy compliments; and theatrical shapes against stern lines are visible in the whole space. This apartment is an unusual and trendy canvas – a rendezvous of the shabby chic sensibility with the best of modern-goth.











# Rustic Revamp



This is a timeless rendition of rustic elegance inspired by colonial influence. Sun kissed flooring, teak wood furniture, vintage tiles and wallpapers are the main elements in the simple and understated home. Royal Blue sofas and soft neutral curtains complete the look in the living areas while the bedrooms are neutral with subtle highlights from blues and rusts. A classic wood kitchen is visible from the dining. The nostalgic shell houses contemporary furniture creating a confluence of the olden days meeting modern times.

















# Corporate Office



# Zen Retreat



Minimal and sophisticated, this office is a breath of fresh air with its colour blocks and clean lined-furniture. Free of fuss and opulence, it makes a statement of less is more. The use of several verticals carefully positioned gives the space a theatrical feel in a minimal way, making it seem like the screens would almost slide open and expose a different set. The marketing office gives a little taste of practicality, functionality and affordability in union with aesthetics.

















Villas & Mansions



# Urban Chic Retreat

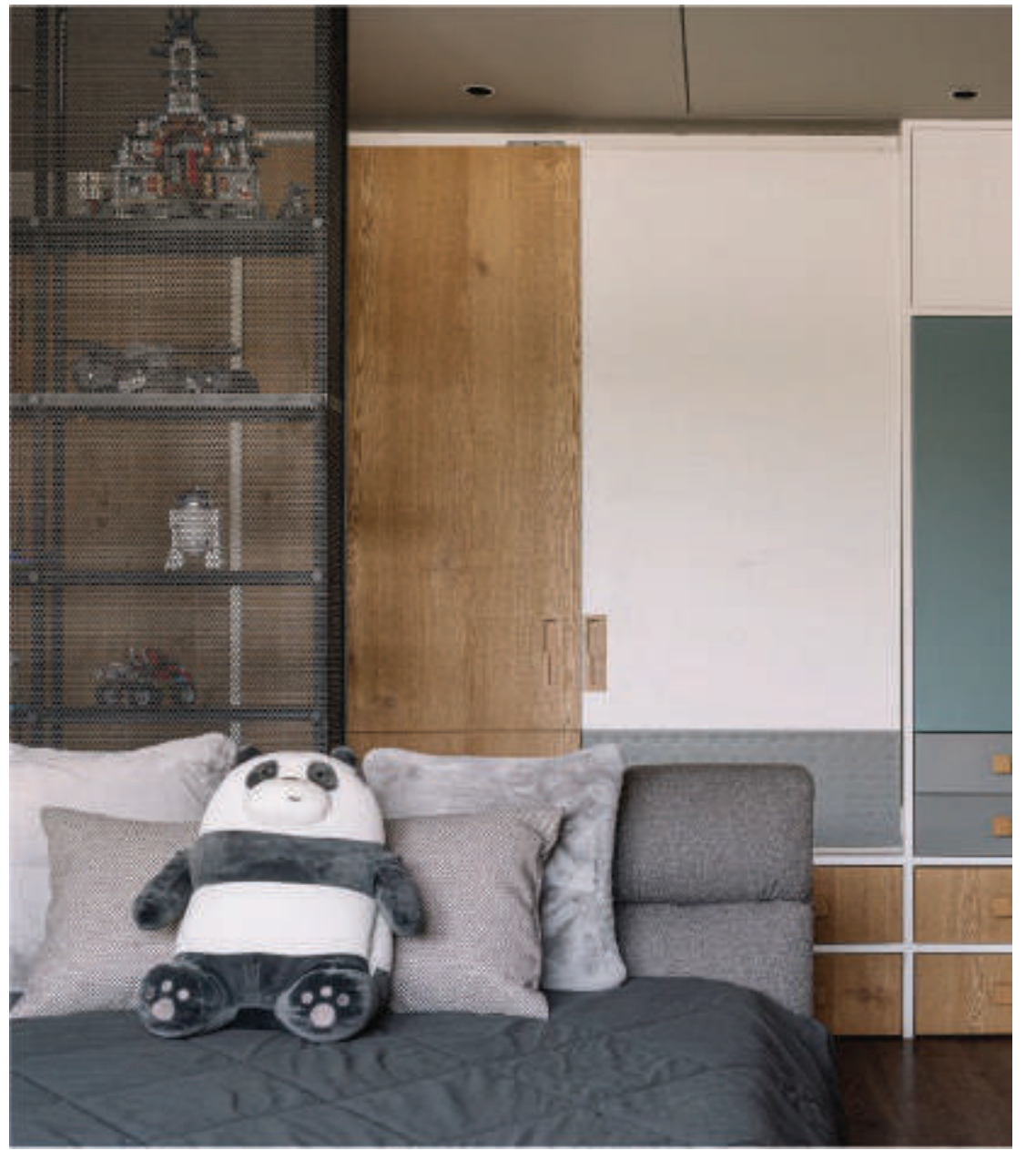


From the motley entrance to the corner of each room, the journey is a result of a deep and thoughtful design process. Right from the French limestone flooring to each intricate cornice; from unique ceiling mouldings to the multiplicity of passage portals; from the multi-material main entrance with its striking door to the magnificent foyer; from each accessory in each niche to the pairing of each fabric with each cushion; from the vintage railings to the bathroom tiles; each element is special.

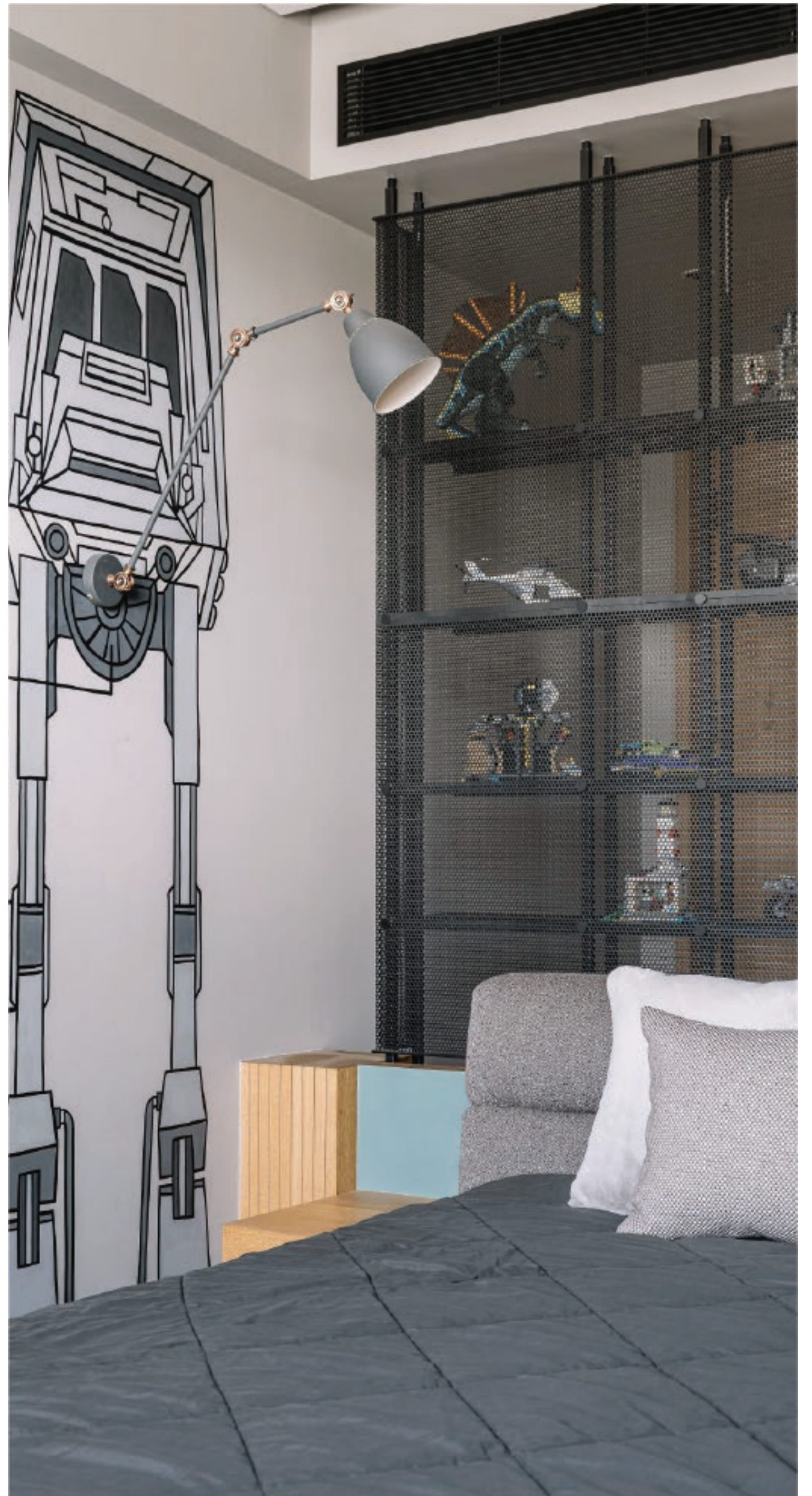














# Timeless Traditions

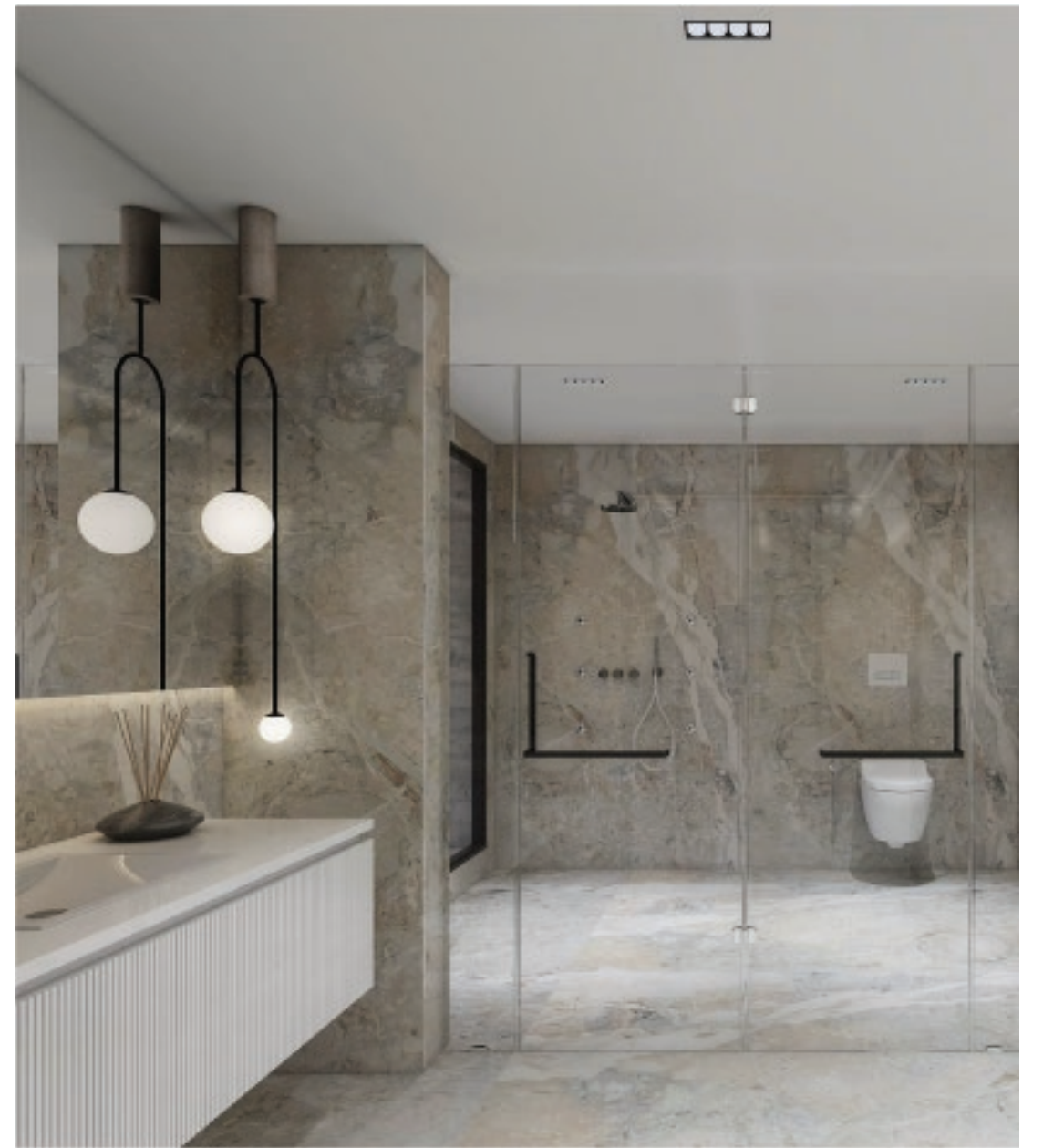
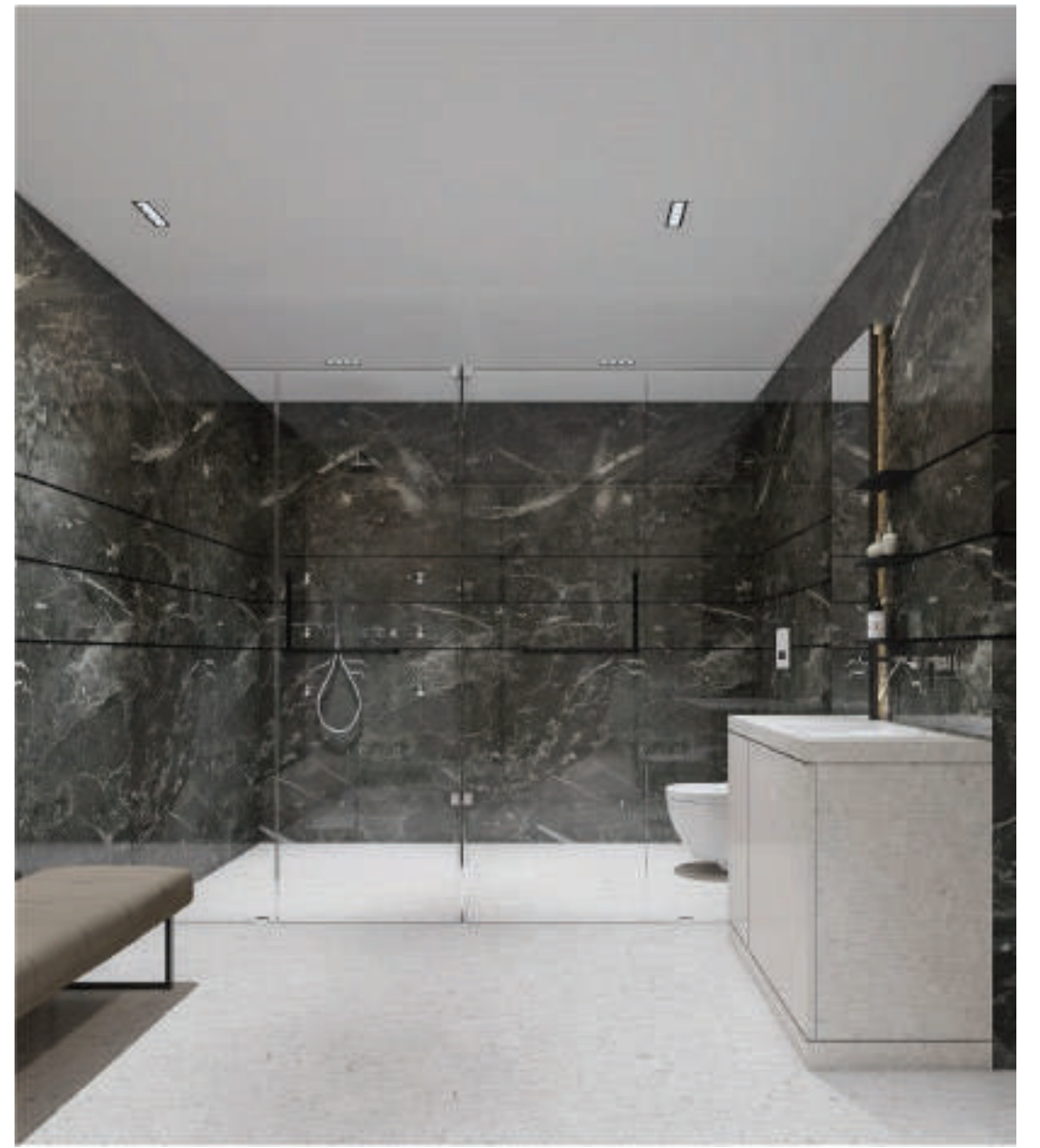


This villa is a careful and controlled curation of limited elements. Light and warm colours, soft lines and rounded shapes are the primary language of this home. This home interestingly exists in opposites. But even the opposites are subtle. It is serious and at the same time whimsical. It is restrained yet curiously warm. It is serene and peaceful but yet alive with energy. It is less but still it is more. And it is in this gentle dichotomy lies the uniqueness of this home.













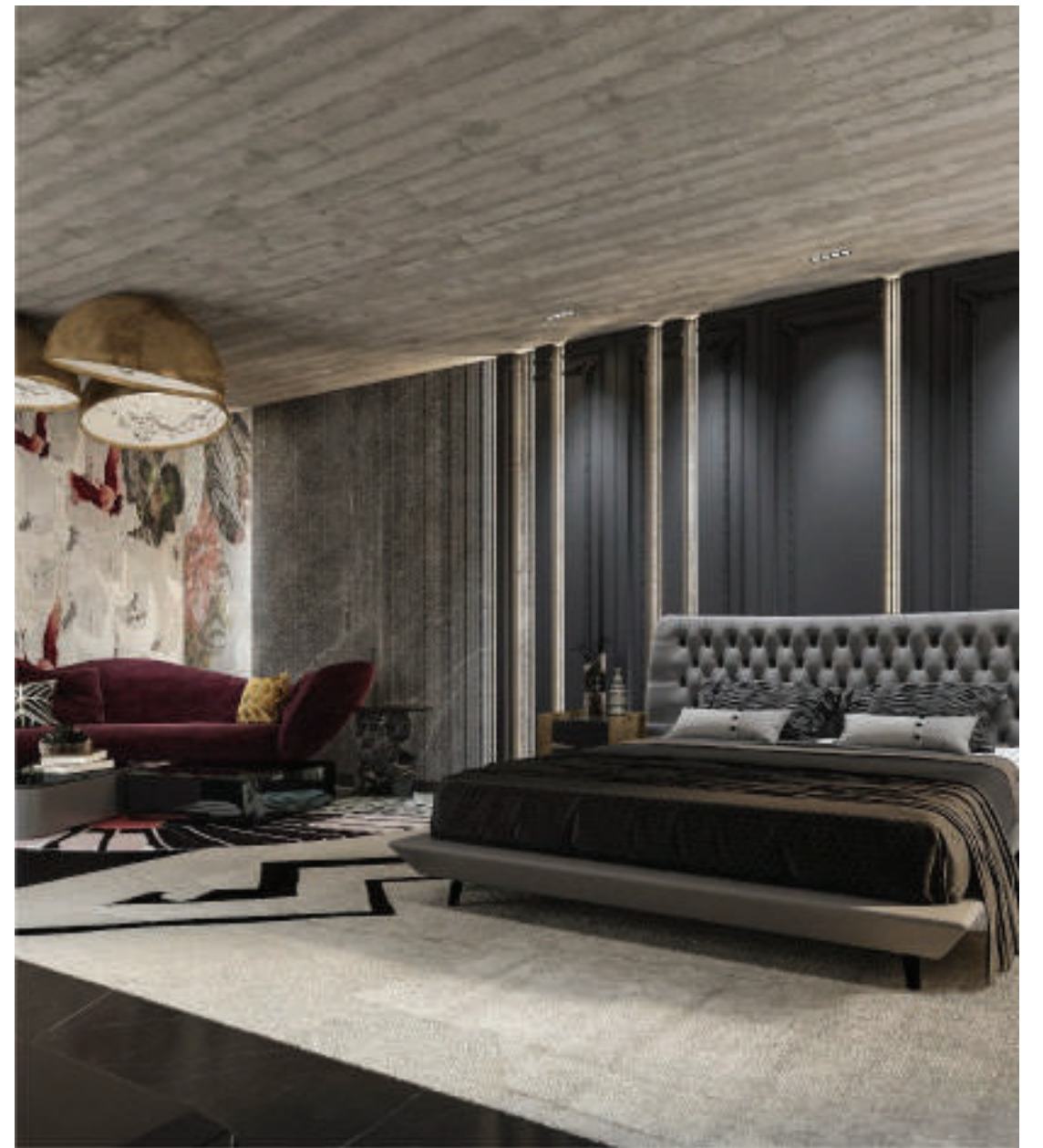
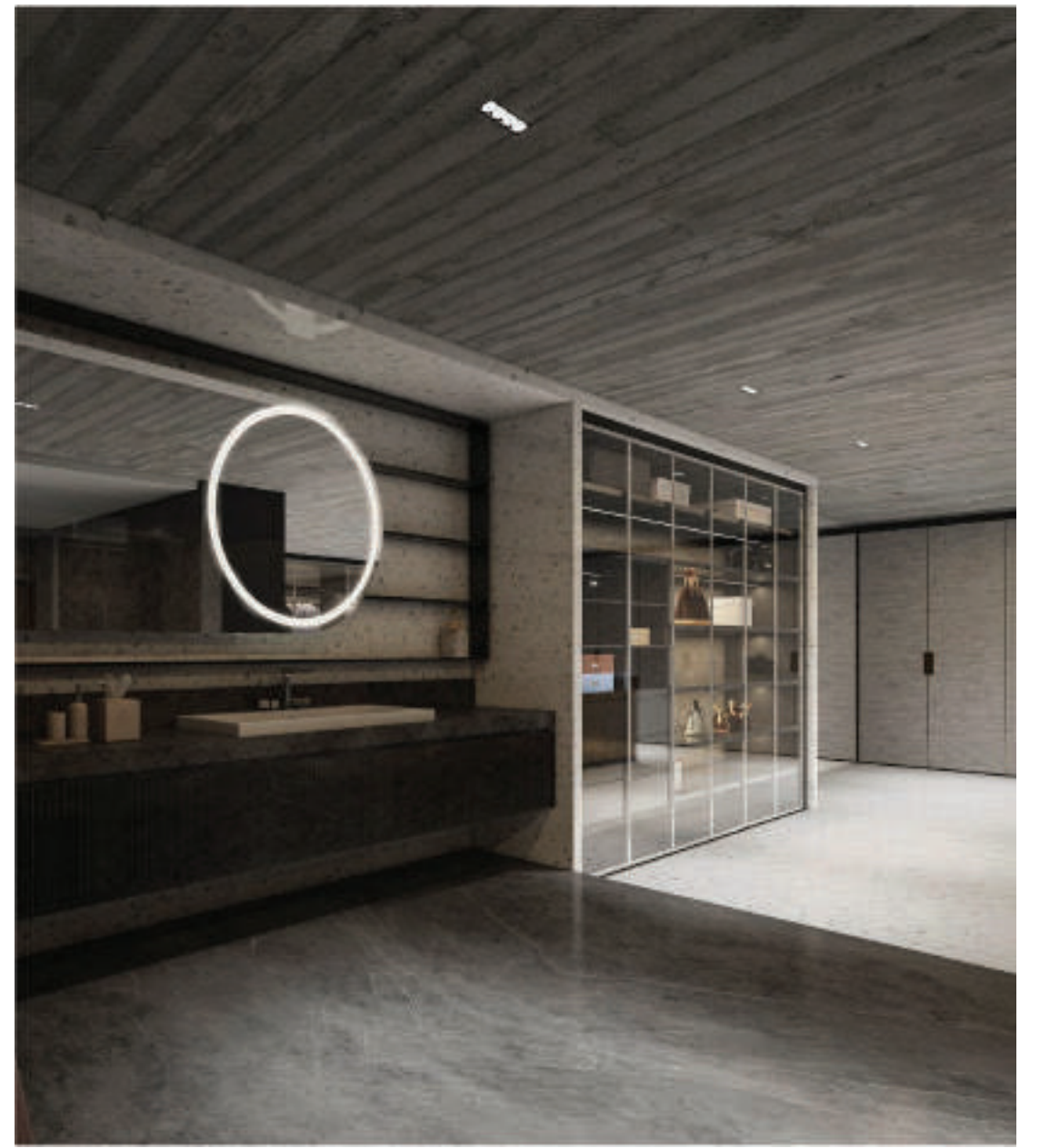


















# Burton Outhouse

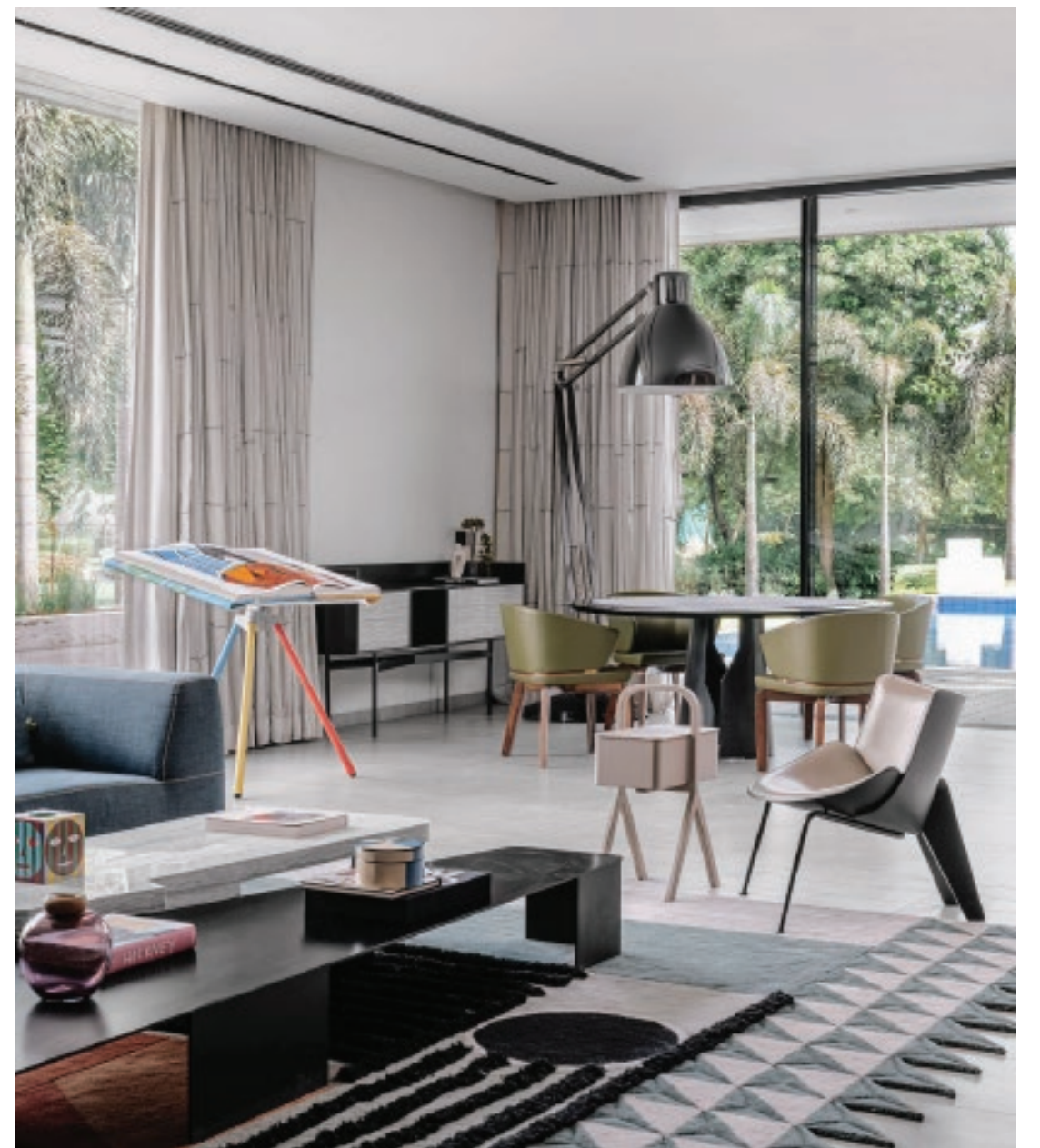


Of scales, volumes and epic proportions, the Brunton House is simply magnificent or magnificently simple in its design approach and philosophy. While the materials of the home impart simplicity to it, the volumes take it to a whole new level of grandeur. The use of straight, angular and parallel lines which seem to sometimes converge creates stunning optics of geometry that almost seem abstract. These are experienced by the movement from one level of the house to another. Understated furniture and Indian art paired with local materials imparts a sense of richness, tradition and timelessness.















# Mid-Century Marvel

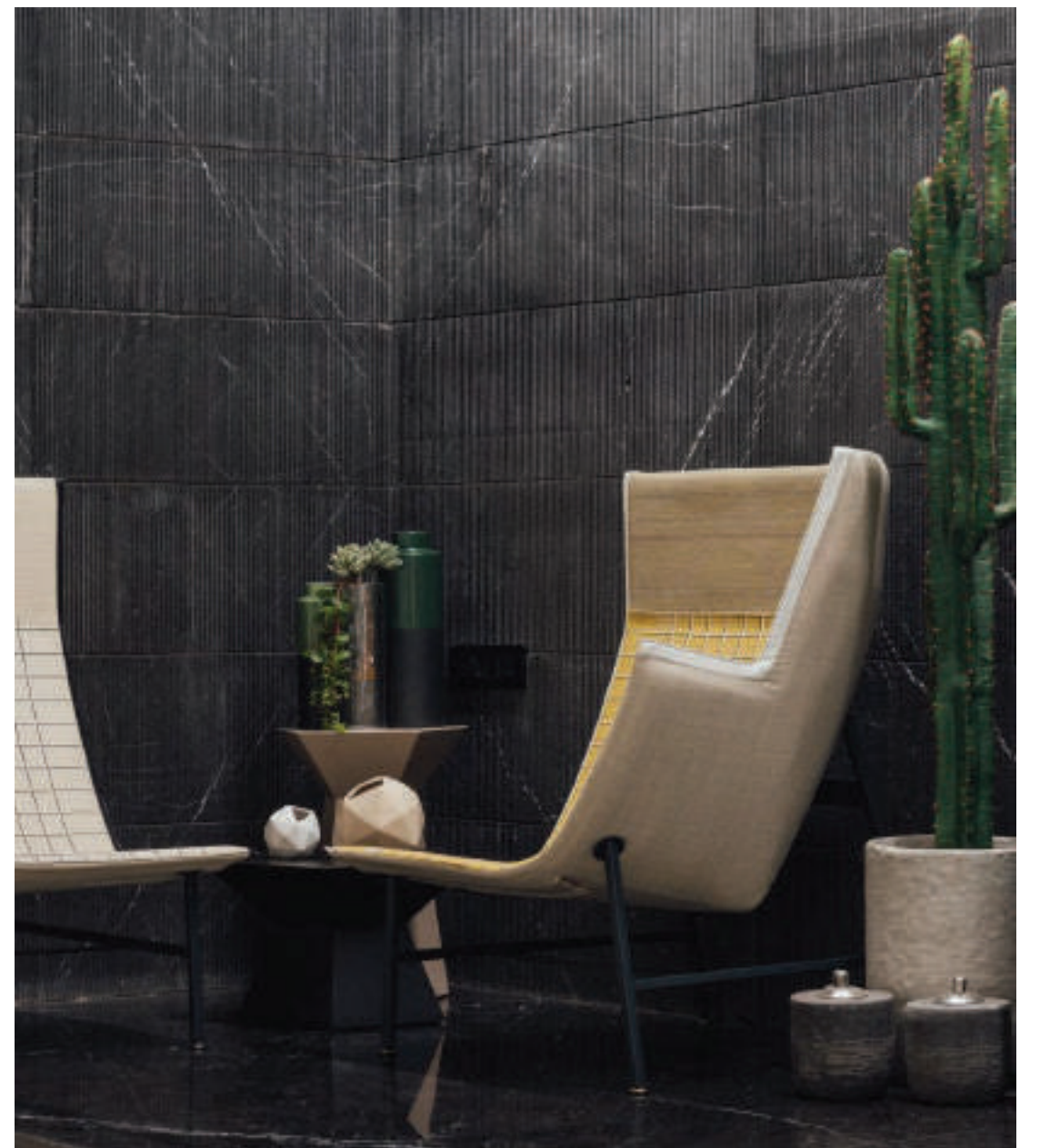
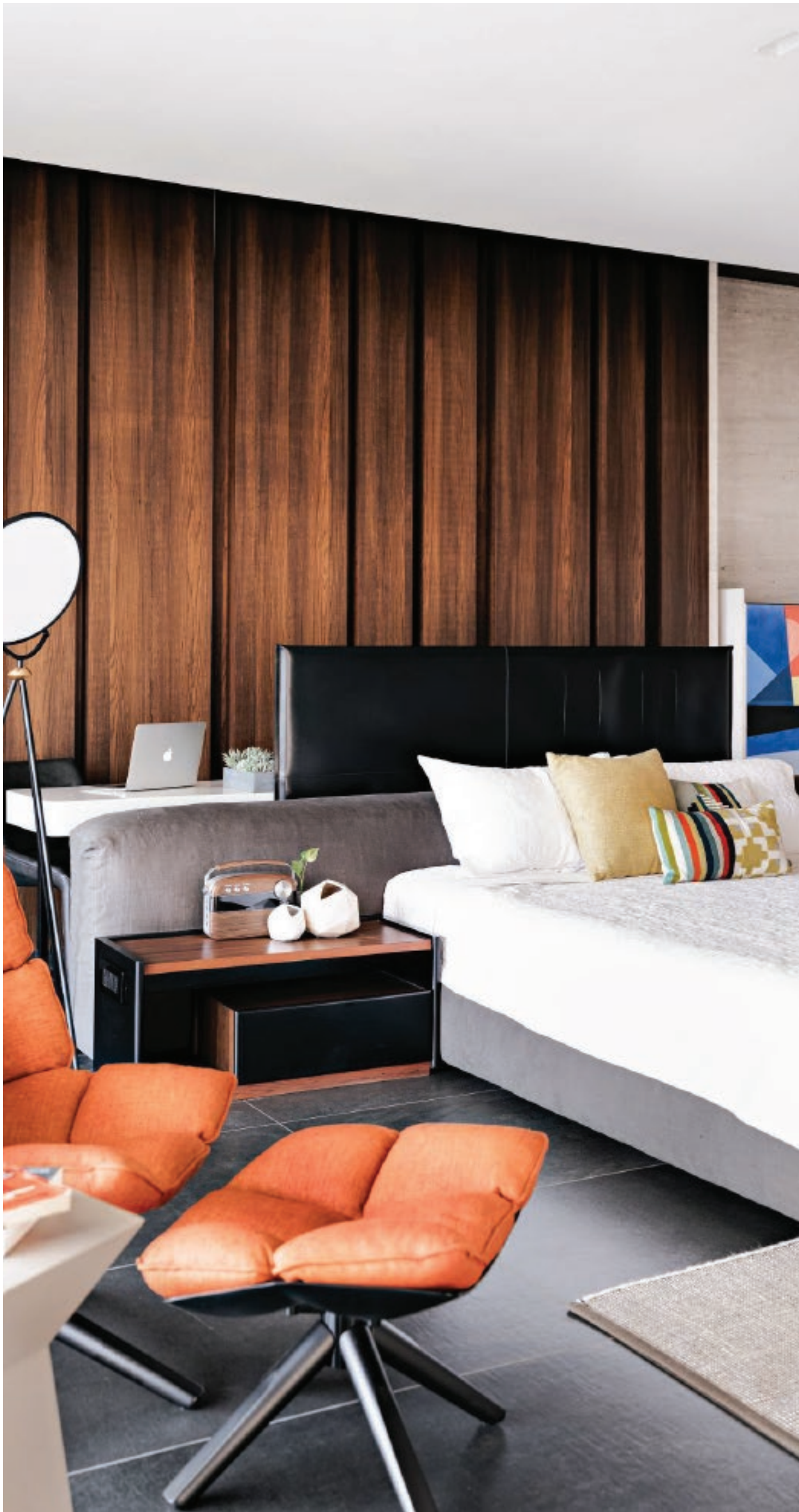


Villa Brisa with its Portuguese inspired façade is a dream home for anyone who loves a charming and breezy style. Mint stone are used for the floor in a beautiful shaped pattern that starts on two opposite sides of the living room and meets in the middle. White rafters on the common pitched roof enhance the height of the space, the walnut doors add tropical-ness. The main colors are indigo and blush emanating a cool and coastal feel to the whole house. Bedrooms use these combinations in various proportions. Soft and sophisticated, Villa Brisa is a blend of luxury and rustiness.















# Glamour in Grayscale



This is a boutique luxury 6 bedroom villa. The bedrooms and lavish indoor and outdoor entertainment spaces were designed to maximize the spectacular green views and natural light. The placement and color palette of the contemporary furniture and accessories enables the space to blend seamlessly into the surrounding environment. The rich warm look has an element of sophisticated luxury but is also minimalistic and open. The space was truly designed from out to in.















## Let's Connect!

 +971 522188354

 [info@pendulumdecor.com](mailto:info@pendulumdecor.com)

 [www.pendulumdecor.com](http://www.pendulumdecor.com)

THANK YOU

---

---